

7.1.3 - Describe the facilities in the Institution for the management of the following types of degradable and non-degradable waste (within 200 words)

(Ref. following link for images

[https://drive.google.com/drive/folders/1-BHm3uVDMEZ8WLFvP\\_3XKpWLCL9ajbiZ?usp=sharing](https://drive.google.com/drive/folders/1-BHm3uVDMEZ8WLFvP_3XKpWLCL9ajbiZ?usp=sharing))

□ Solid waste management

Solid waste is segregated as bio-degradable and non-degradable and handed over to Sambalpur Municipal Corporation (SMC) as a part of the Swachh Bharat initiative from the university halls of residence and staff quarters. It was partly active in previous years. It was extended to the total campus in January 2022. In the institute also similar segregation is done in different dust bins in the cafeteria, canteens, toilets and corridors and disposed of in a similar manner. Workshops and awareness programmes are organized in the university. Posters are put in different locations “say no to plastic”. In the first week of October mass cleanliness drive involving all students, staff, cleaning staff and security is organized to make students aware of reducing garbage dumped here and there.



Fig. 1. SSG boards “plastic free campus”



Fig.2. Blue and Green bins near all buildings

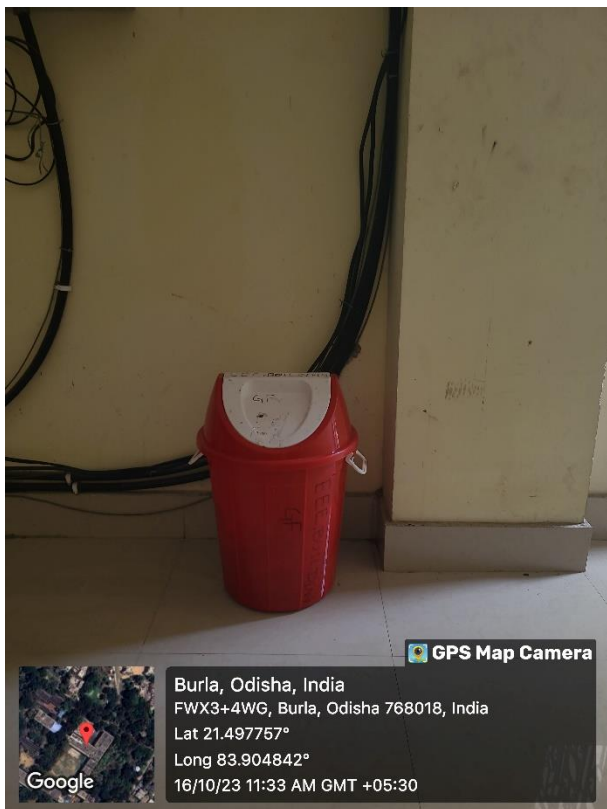


Fig.3. Swing bins in University Corridors



<https://drive.google.com/file/d/1wXScJsK766T8dVTYJmyrJREditLPf9ut/view?usp=sharing>

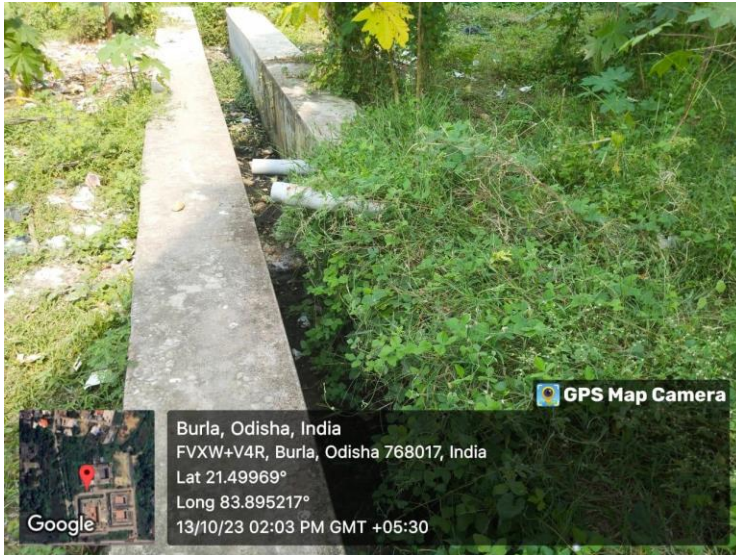
Fig.4. Cleanliness drive



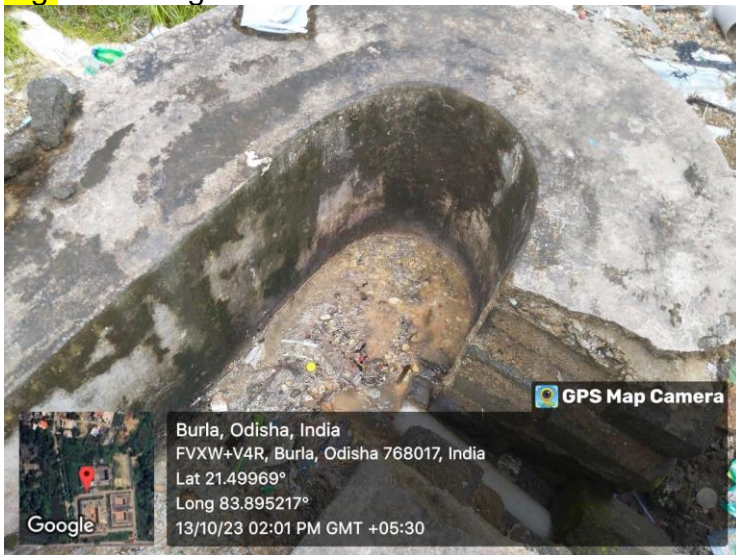
Fig.5. SMC workers

Liquid waste management

The waste sewerage water is collected in well-constructed drains and are maintained regularly to prevent water logging.



**Fig. 6** Drainage near hall of residence



**Fig. 7** Drainage near Visakha hall of residence

**Fig.8** Drainage renovated in University (Photo attached)

Biomedical waste management

There is no reason of such waste in the University. The campus is free from any kind of hazardous medical waste.

E-waste management

The electronics wastes from circuit components, old machines and PCs are disposed of after proper documentation and write-off through tender calls and approval (<https://vssut.ac.in/doc/Minutes-42nd-BOM.pdf>). For residential facilities, e-waste are collected on Saturdays separately by workers of SMC.

Waste recycling system

The students are involved in research for recycling and upcycling of waste such as waste paper, construction of building materials from waste such as fly ash, polythene etc. A team of B. Tech students is involved in multidisciplinary solution for waste recycling system names as team sustainability as their co-curricular activity.



**Fig. 9** Team of Sustainability

- Hazardous chemicals and radioactive waste management

Campus is free from any kind of hazardous medical waste. Ideally, collection, transportation and proper handling of chemicals begin with understanding the potential hazards related to their use such as old battery used for back up are strategically exchanged during new purchase instead of disposing as waste.